



Split-core Current Transformer CE



JSXXS-XXX-333mV Series

How to use >>> 1



JS series of split-core current transformer offers 333mV at secondary from sensed primary current. Without using secondary CT inside of meter, users directly connect JS series to meter for high accuracy metering application. It enables one meter to be adopted for various current rating by only changing primary CT so it makes compact meter design and reduces developing cost. Also, over-voltage protection circuit is included to offer safe, fast and cost effective installation.

Applications

- Power meter
- Switchgear
- Distributed measurement systems
- General Sets
- Control panels

Benefits

- Small-size, light-weight
- Simple Installation
- Over-Voltage protection circuit is installed.

Specification

Features

- PC spring, output-terminal, secure locking hinge, one-touch structure make easy to install to the existent equipments such as a power distribution boards.
- Isolated plastic case recognized according to UL94-V0
- UL / EN 61010 - 1 certified

Notice

- Core contact surface is waterproofed, however if it gets rusty, you could reuse after removing rusts with spraying WD-40 or CRC5-56 on the rusted side
- Customizing output lead wire

Accuracy	Class 0.2S / 0.5S / 1
Output Terminals	2 X M3-Screw, with Terminals cover
System Voltage	720V(0.72kV)
Overload withstand	1.2 times rated current continuously
Compliant with	IEC/EN60044-1 & IEC61010-1
Operating Temperature Range	-20°C to 55°C
Relative Humidity	0-85% non-condensing
Test Voltage	3kV for 1 minute
Frequency Range	50/60Hz
Protection Level	3.0V0-P
Installation Category	CAT II or CAT III 600VAC



How to Order / Model Reference

eg JS17S-000/333mV

Model JS17S

Primary Current

Select code from ratio table

Secondary Voltage

333mV 333mV

Current Transformer Ratios

Primary Current A	Burden			Code
	cl. 0.25 VA	cl. 0.55 VA	cl. 1.0 VA	
200		0.033		200

333mV Secondary

Accuracy conforms to IEC 60044-1, meets the measuring range from 1 to 120 % of In

How to Order / Model Reference

eg JS24S-000/333mV

Model JS24S

Primary Current

Select code from ratio table

Secondary Voltage

333mV 333mV

Current Transformer Ratios

Primary Current A	Burden			Code
	cl. 0.25 VA	cl. 0.55 VA	cl. 1.0 VA	
250		0.033		250
300		0.033		300

333mV Secondary

Accuracy conforms to IEC 60044-1, meets the measuring range from 1 to 120 % of In

How to Order / Model Reference

eg JS36S-000/333mV

Model JS36S

Primary Current

Select code from ratio table

Secondary Voltage

333mV 333mV

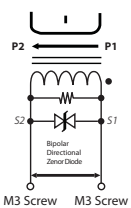
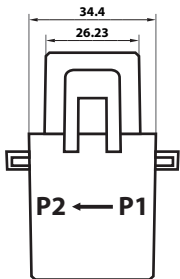
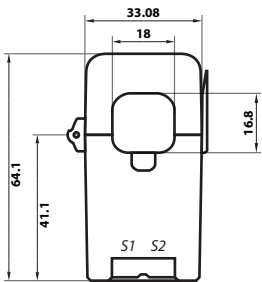
Current Transformer Ratios

Primary Current A	Burden			Code
	cl. 0.25 VA	cl. 0.55 VA	cl. 1.0 VA	
300		0.033		300
400		0.033		400
500		0.033		500
600		0.033		600

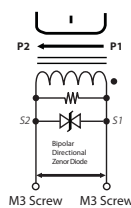
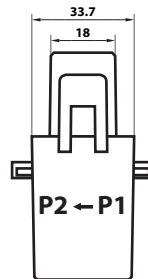
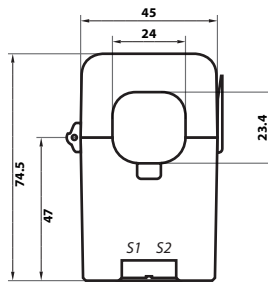
333mV Secondary

Accuracy conforms to IEC 60044-1, meets the measuring range from 1 to 120 % of In

Dimensions



Dimensions



Dimensions

