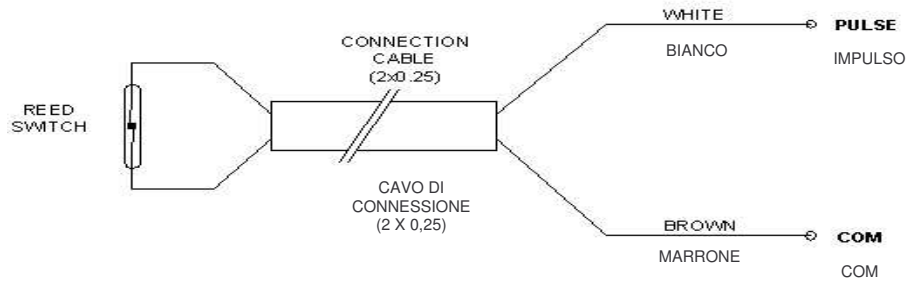


Schema collegamenti *Cable Connections*



Dati tecnici *Technical Data*

- Fattore impulsi: 1 impulso/10 litri
Pulse value: 1 pulse/10 liters
- Contatto reed immerso in resina; grado di protezione: IP68
Reed switch moulded plug; protection class: IP68
- Caratteristiche elettriche: 24 V~, 0,1 A
Contact ratings: 24 V~, 0.1 A
- Lunghezza cavo: 1 m
Cable length: 1 m
- Temperatura di esercizio: -25 °C ÷ +90 °C
Operating temperature: -25 °C ÷ +90 °C
- Temperatura di immagazzinaggio: -45 °C ÷ +90 °C
Storage temperature: -45 °C ÷ +90 °C

Emettitore impulsi reed switch per contatori per acqua a getto unico CD SD **Istruzioni di montaggio**



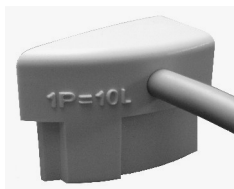
Reed Switch Pulse Emitter for CD SD Single Jet Water Meters Mounting Instructions

Componenti *Components*

Contatore CD SD predisposto
CD SD pre-equipped water meter



Sensore reed switch
Reed switch sensor

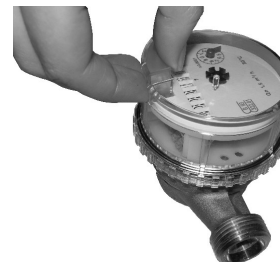


Sigillo adesivo
Adhesive seal

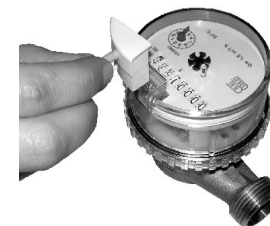


Istruzioni di montaggio *Mounting Instructions*

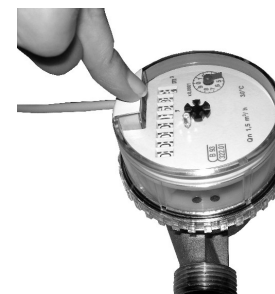
Rimuovere la parte come da figura
Remove the cap as shown in the picture



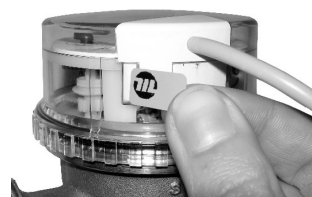
Inserire l'emettitore impulsi
Insert the pulse emitter



Assicurarsi che l'emettitore impulsi sia inserito completamente
Ensure that the pulse emitter is inserted completely



Sigillatura del sensore
Sensor sealing



Contatore con emettitore impulsi
Water meter with pulse emitter

