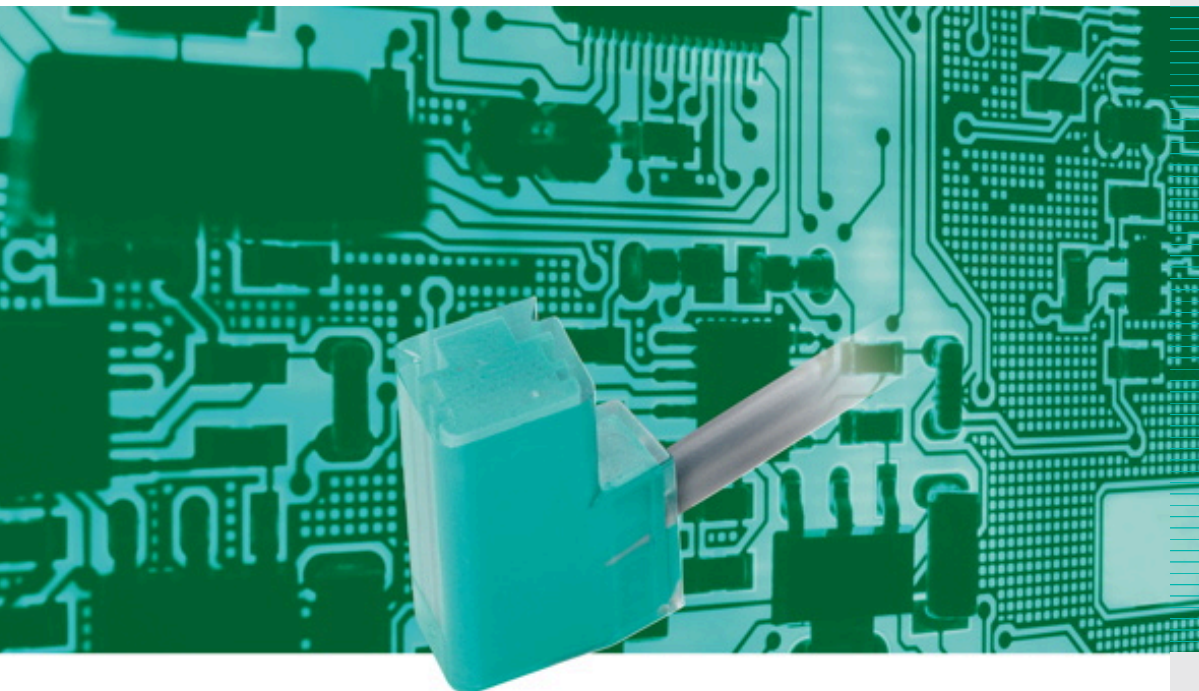


# REED SWITCH 570

ELECTRONIC ACCESSORY | TRANSMITTER

**DIEHL**  
Metering



## APPLICATION

Generation of a high pulse frequency for electronic processing (e.g. signal converters) as well as remote transmission of analogue flow rate value to display instruments or recorders, pipe leakage monitoring, control of pumps and valves, dosing and measuring heat amounts.

## FEATURES

- ▶ Sensor easily replaced without affecting the water meter calibration
- ▶ Two pulses of different values can be tapped off simultaneously
- ▶ Integrated contact protection available on special request

# REED SWITCH 570

ELECTRONIC ACCESSORY | TRANSMITTER

## FUNCTION

The sensor acts together with the magnet fitted as standard in the counter of the water meter to provide a pulse frequency proportional to the flow. A reed switch is used as sensor and the initiator is an impeller fitted with a magnet, which creates one switching pulse per revolution.

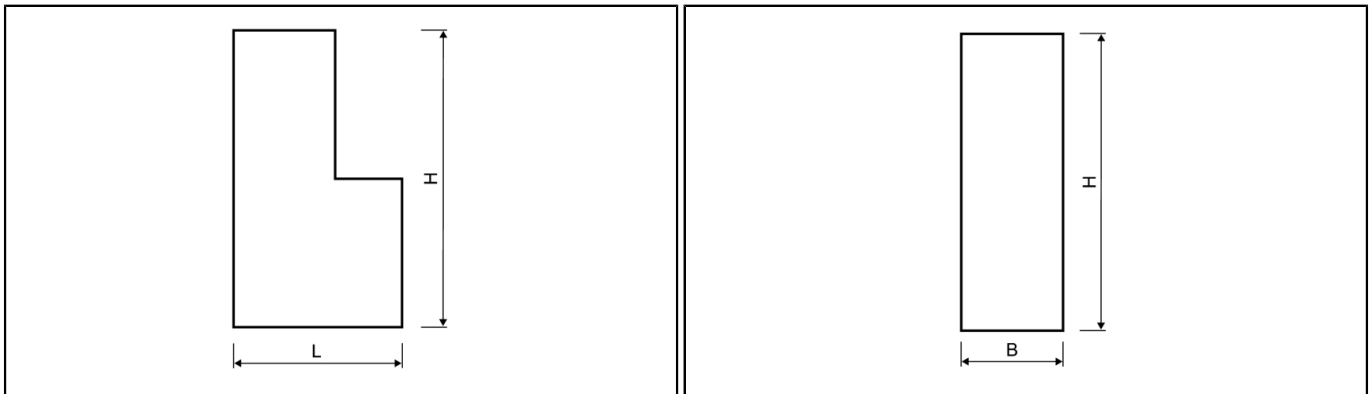
## TECHNICAL DATA

REED SWITCH 570		
Version	Reed switch (make) cast in plug	
Contact rating	24 V ~, 0.2 A	
Cable type	2 x 0.25 mm <sup>2</sup>	
Cable length	m	2
Cable length (without EMC test)	m	Max. 10
Operating temperature	°C	-25 ... +90
Storage temperature	°C	-40 ... +90
Protection class	IP 68	

## USABILITY

REED SWITCH 570		
For bulk water meter	WESAN WP 222, WESAN WS 233	
Pulse value   DN 50 - 125	m <sup>3</sup> /pulse	0.1 / 1
Pulse value   DN 150 - 300	m <sup>3</sup> /pulse	1 / 10
Pulse value   DN 400 - 500	m <sup>3</sup> /pulse	10 / 100
- - -	- - -	- - -
For multi-jet meter	CORONA MC 118	
Pulse value   Q <sub>n</sub> 1.5 - 15	m <sup>3</sup> /pulse	0.1 / 1

## DIMENSIONS



REED SWITCH 570			
Length	L	mm	11
Height	H	mm	25
Width	B	mm	9.5

## NOTE

- The transmitter must be installed in a certain position. Correct installation = cable downwards!
- Reed switches are not separate electronic devices and therefore do not require CE marking
- Overvoltage protectors are recommended if long connecting cables are used

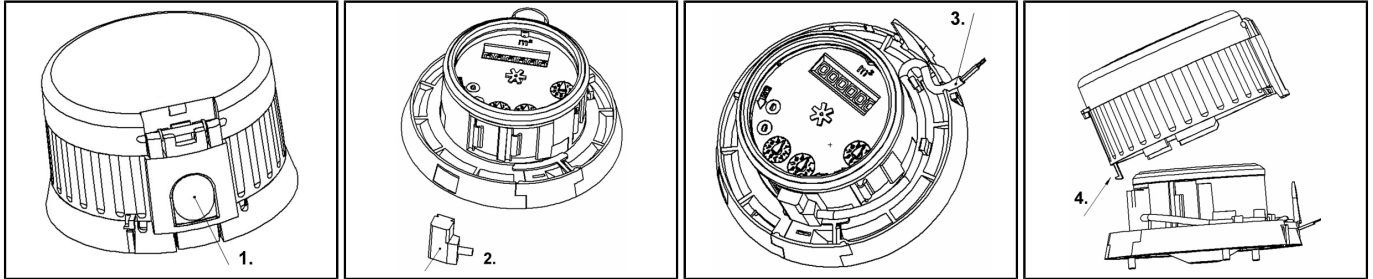
# REED SWITCH 570

ELECTRONIC ACCESSORY | TRANSMITTER

## ORDER REFERENCES

Type	Standard 30 °C	30 °C	30 °C
Usable for	WESAN WP 222, WESAN WS 233	WESAN WP 222, WESAN WS 233	CORONA MC 118
Counter version	MFD or XK	MFD or XK	Standard
Remark	2 m cable	10 m cable	2 m cable, PG7 connection
Article number	630 061	630 064	570 000 20

## INSTALLATION OF TRANSMITTER FOR MFD COUNTER



- Remove protective cover by pressing in the catch (1.).
- Press transmitter (2.) into the desired position on the counter (the pulse sequences can be read off the dial). This is done by pressing the transmitter against the spring and engaging it in position by pressing against the counter.
- Press the transmitter cable between the cams on the cover ring and the counter wall for strain relief purposes.
- Then bring out the cable through the U-shaped cut-out (3.).
- Snap the protective cover into the cover ring with the catch (4.) first.